

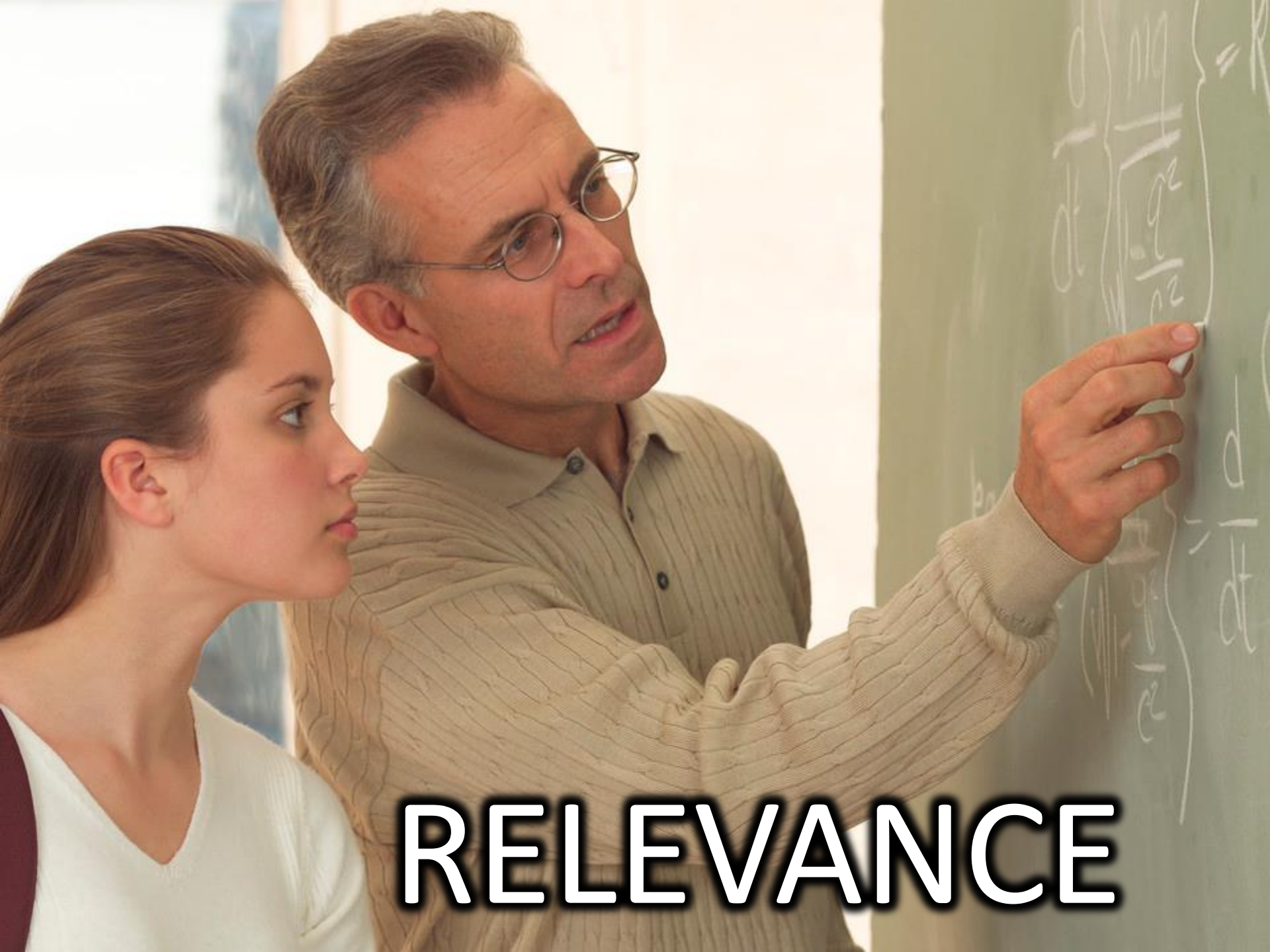
# The STEM Professions in the 21<sup>st</sup> Century

Your Daughter is Worthy of  
Entering this Space  
October 10, 2015

Douglas Askegard, EE  
IEEE Buenaventura Professional Activities Chair  
IEEE Buenaventura Robotics Chapter Chair  
[dougaskegard@ieee.org](mailto:dougaskegard@ieee.org)



RELEVANCE



**RELEVANCE**

**RELEVANCE**



**LEVERAGES  
THE WORK OF MANY**

RELEVANCE

VIRTUALLY

CONNECTED

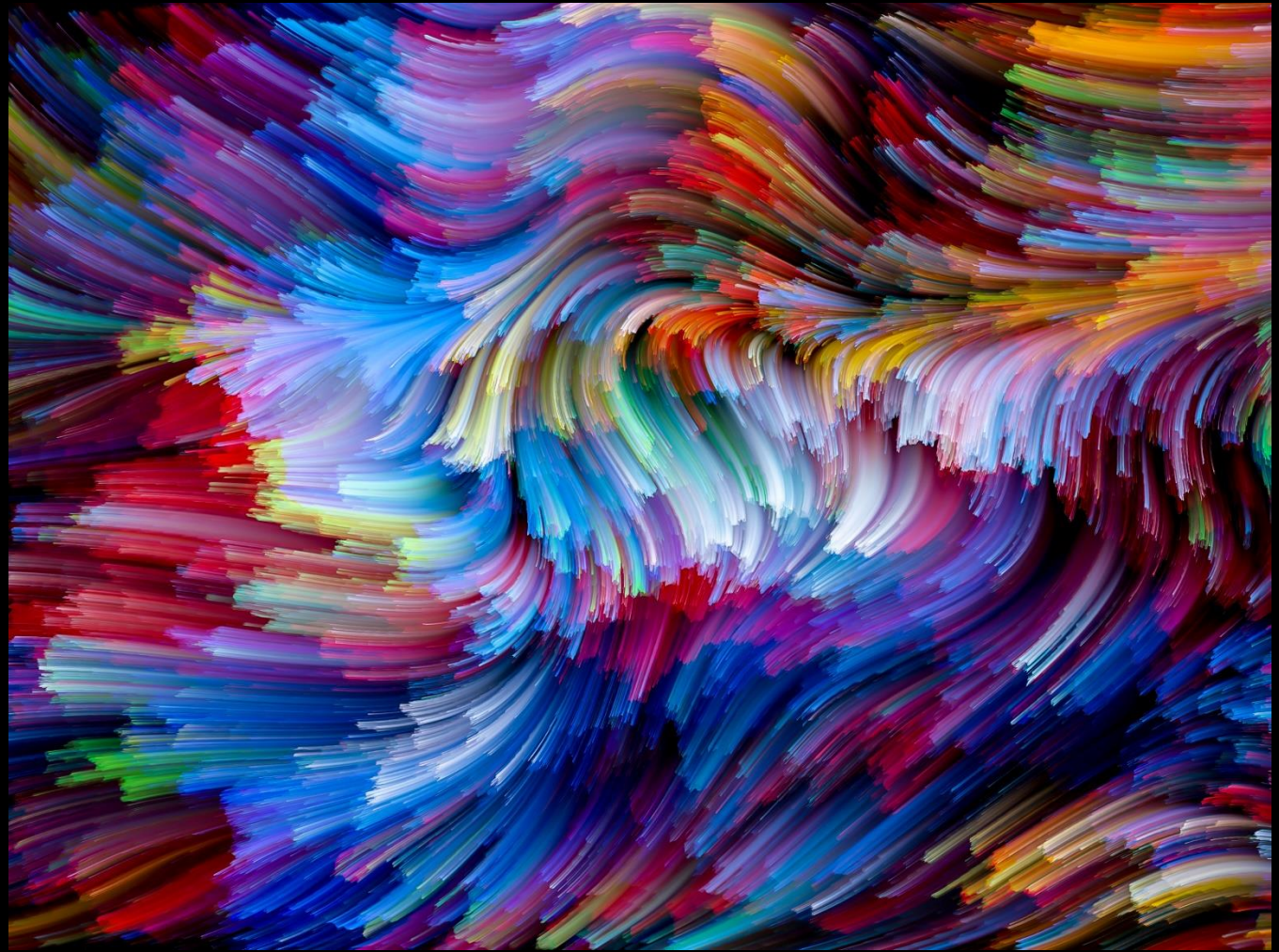


RELEVANCE

# CONTINUOUSLY LEARNING



RELEVANCE



BLENDING MULTIPLE FIELDS  
OF KNOWLEDGE

YES TO

COLLEGE EDUCATION



BUT

RELEVANCE IS A MUST

STEM IS ESSENTIAL

TO RELEVANCE

SCIENCE

TECHNOLOGY

ENGINEERING

MATHEMATICS

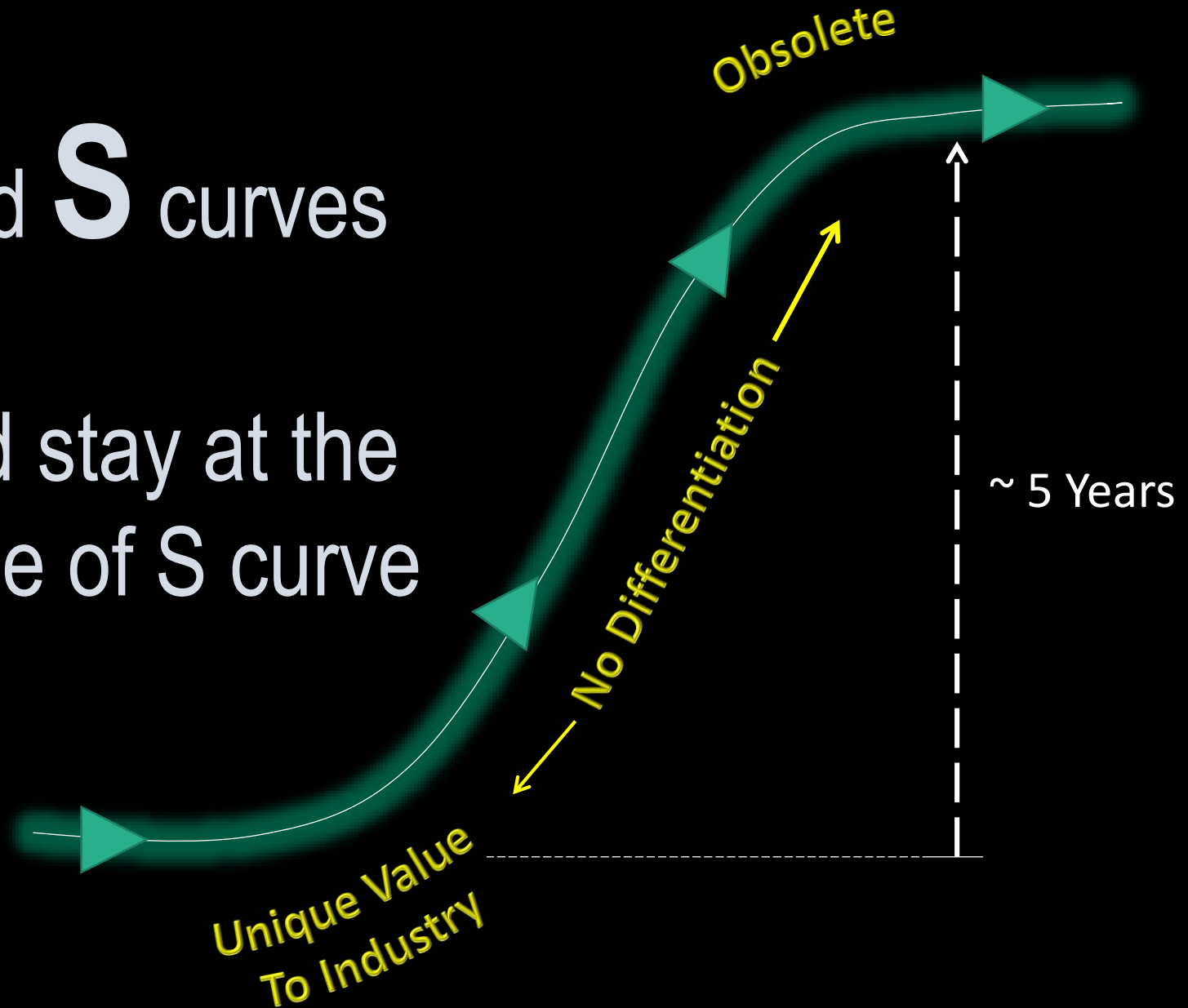


**S curve**

# PROFESSIONAL ADVANCEMENT

Find **S** curves

And stay at the  
knee of S curve



**2015 AND BEYOND**

***MANAGING ALONG THE S CURVES***



**S #1**

**S #2**

**S #3**

**S #4**

**S #5**

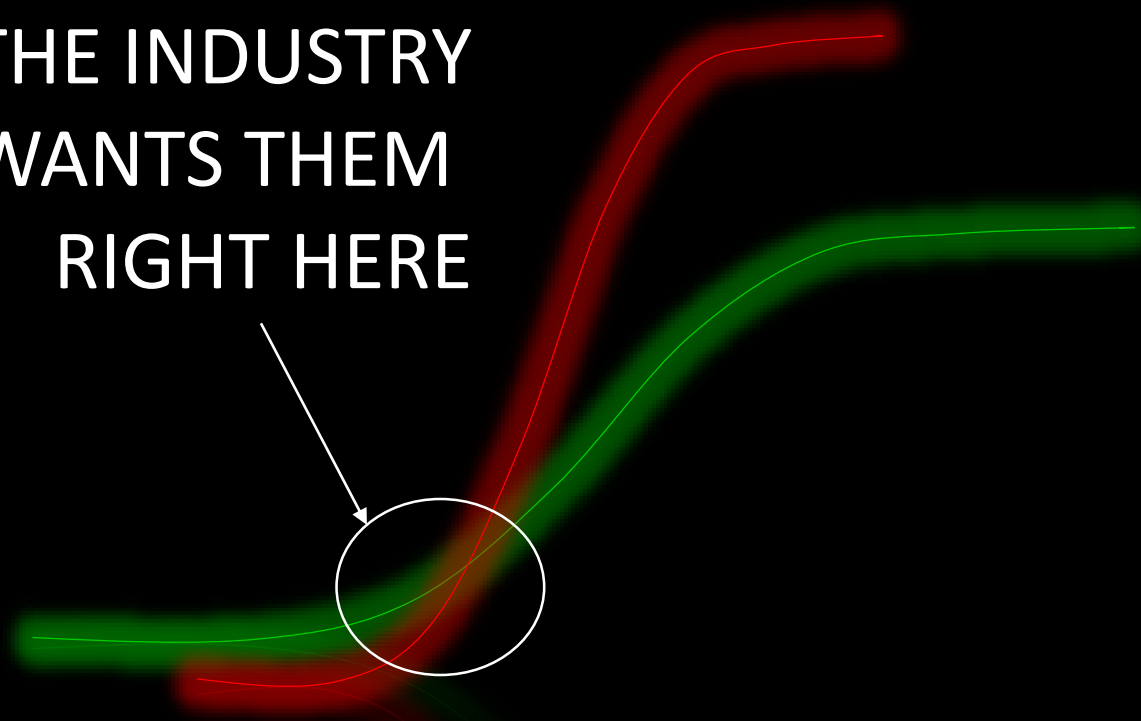
**S #6**

**S #7**

**CONTINUOUS  
MINI-REPOSITIONING**

WE NEED TO INSPIRE YOUR DAUGHTERS  
TO LOOK FOR CONVERGENCE OF  
“S CURVES”

THE INDUSTRY  
WANTS THEM  
RIGHT HERE



# DEPARTURE FOR THE 21<sup>ST</sup> CENTURY JOBS





# S Curves in HEALTHCARE



# “Elderly Woman”: Dominant Healthcare Customer DEVELOPED COUNTRIES



# “The Youth”: Dominant Healthcare Focus DEVELOPING COUNTRIES



# EPIBODIC TREATMENT ARE THE PAST



# PREDICTIVE MEDICINE

DECEMBER 24, 2012

Egypt Divided / Pot's Big Moment / Best of 2012 Movies, Music, Books & More

# TIME

## Want to Know My Future?



Alzheimer's  
Dementia  
Cancer  
Hemochromatosis  
Diabetes  
Asthma  
Cystic fibrosis  
Tay-Sachs disease  
Colon cancer  
Breast cancer  
Huntington's disease  
Epilepsy  
Burkitt's lymphoma  
Malignant melanoma  
Parkinson's  
Glaucoma  
Phenylketonuria  
Prostate cancer  
Obesity

New genetic tests can point to risks—  
but not always a cure

BY BONNIE ROCHMAN

[www.time.com](http://www.time.com)

# PREVENTIVE MEDICINE



# PERSONALIZED MEDICINE

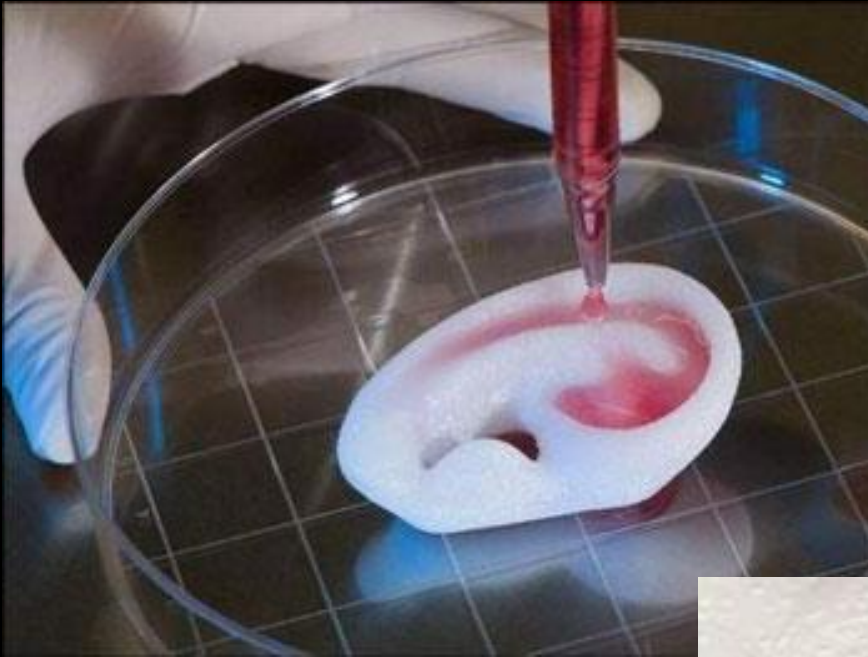


# PRINTED MEDICINE



PRINTED HUMAN SKIN

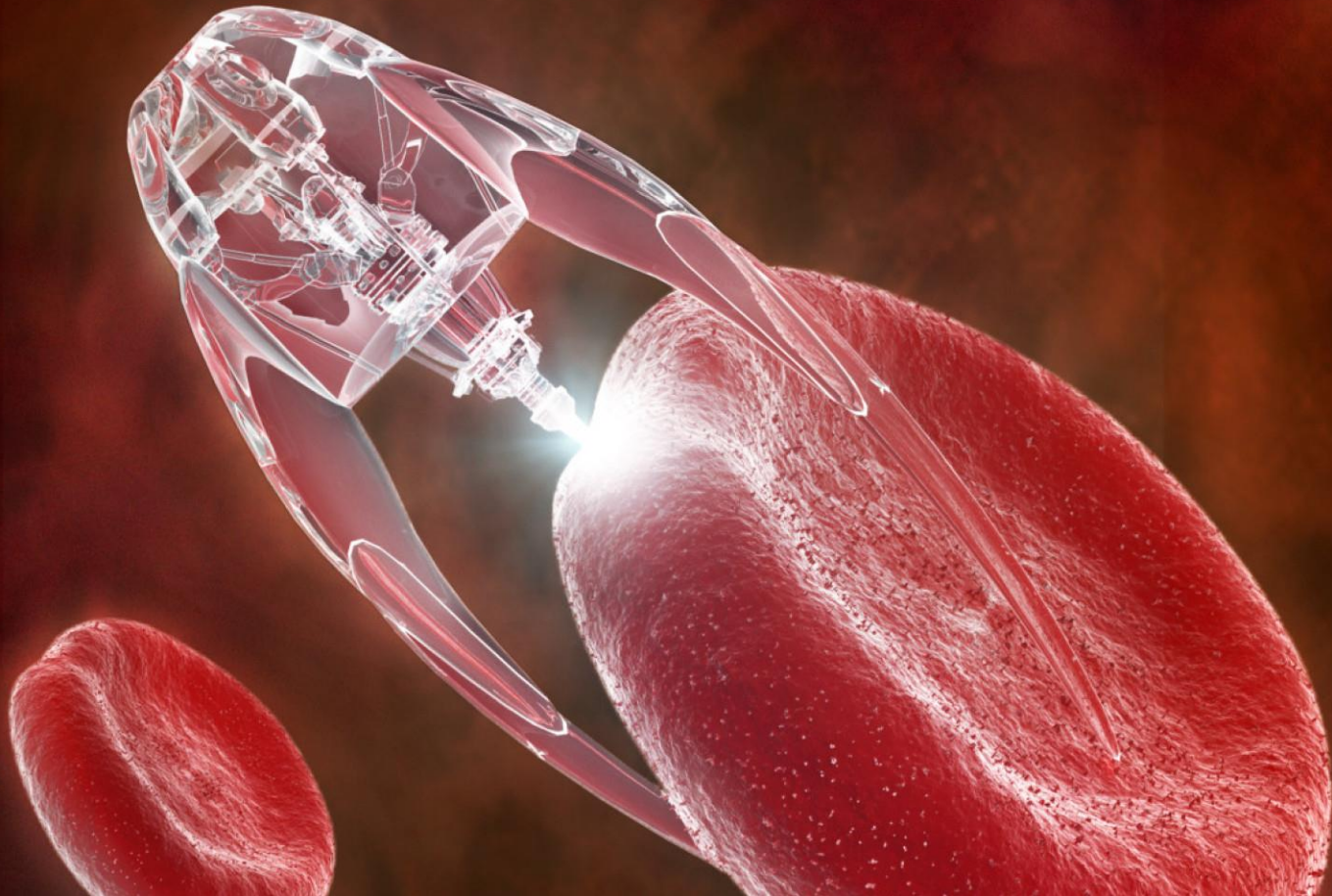
# PRINTED HUMAN ORGANS



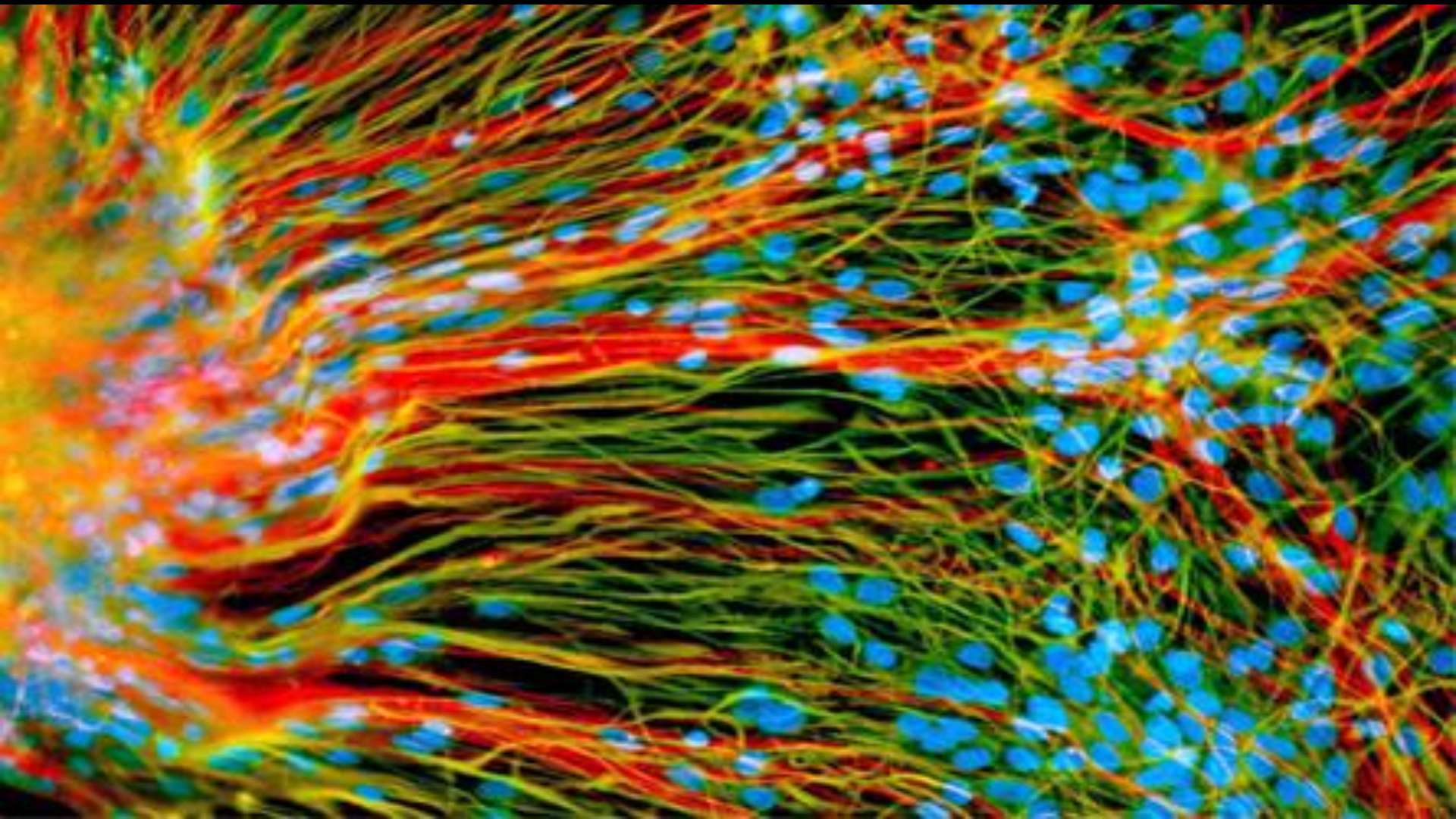


# Fields of the Small

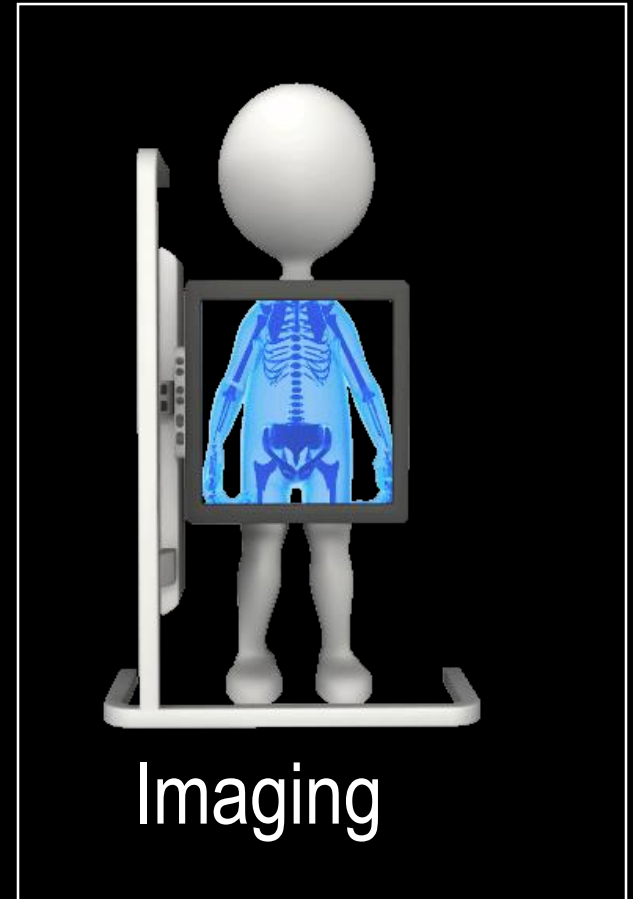
## Nanotechnology, Biotechnology



# Stem Cells



# Medical Revolutions in the Making



# New Jobs that Did not Exist Before



Disease Predictor or Gene Analyst

Disease Prevention Strategist

Medical Test Developer

Immunology and Vaccine Expert

Medical Data Management Specialist

Ethics and Legal Expert





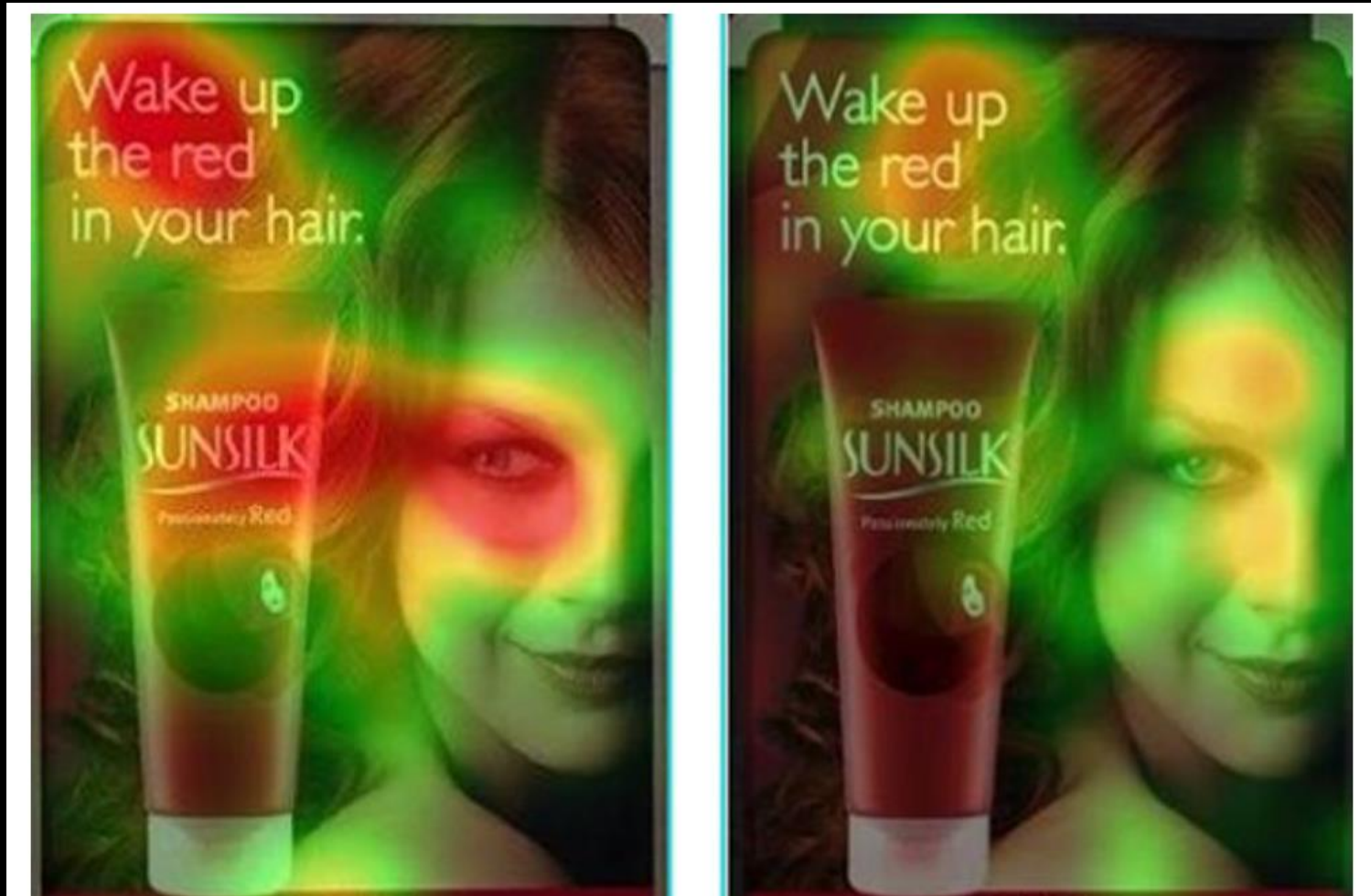
# FACE RECOGNITION - SECURITY

(BIG DATA)



# NEURO-MARKETING

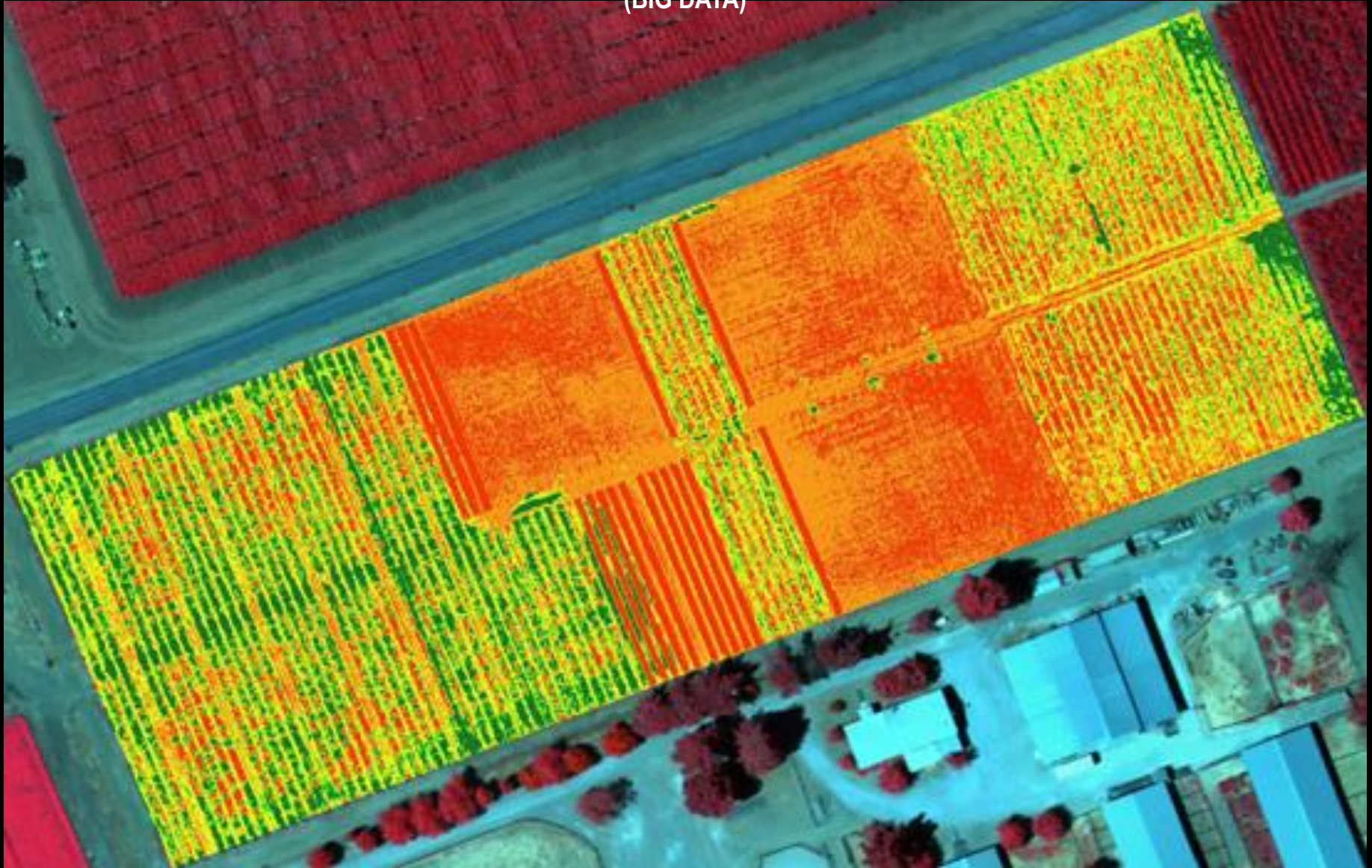
(BIG DATA)





# PRECISION AGRICULTURE (DRONE)

(BIG DATA)



# FROM PHOTO TO DATA INFORMATION

(BIG DATA)



Search Engines

Google Glass

Medicine

Security

# New Jobs that Did not Exist Before



Data Scientist: deep analyst of digital information

Data Architect: expert at organizing “messy” data

Data Visualizer: translator into easy summaries

Pattern Analyst: analyst of common properties

Algorithm Developer: converter of chaos into mathematical equations

# VIRTUAL REALITY



# New Jobs That Did Not Exist Before



Immersive Technologist

Technical Artist

Technical Acting Specialist

Digital Human Rendition Specialist

Human-Avatar Behavior Translator

Immersive Environment Educator

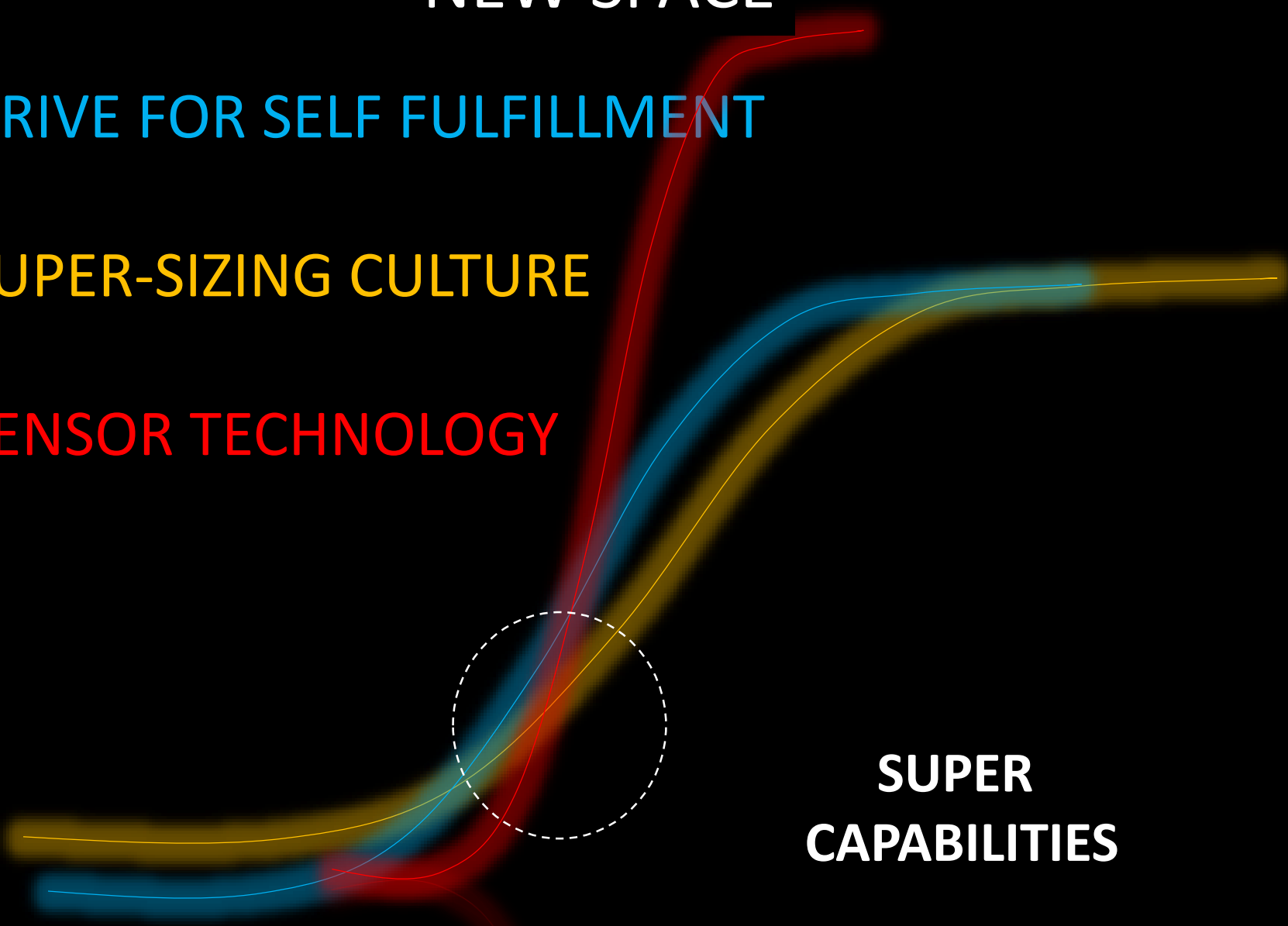
# NEW SPACE

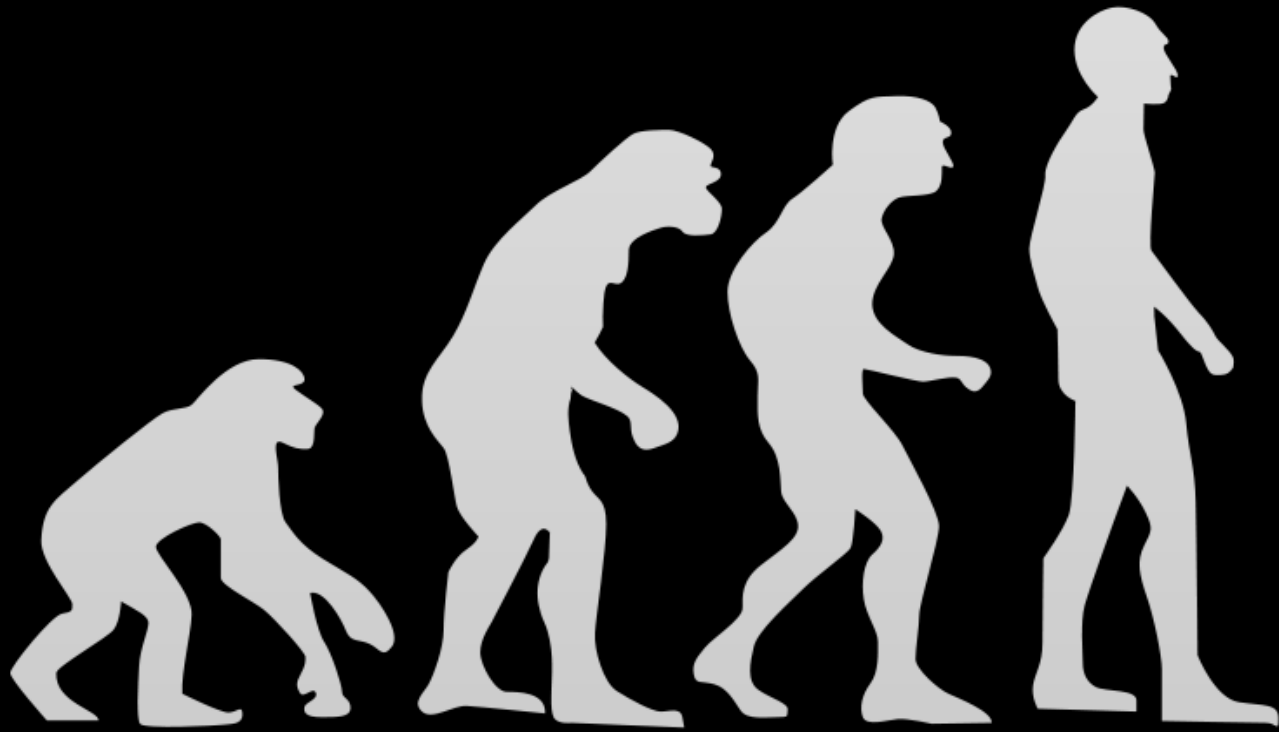
DRIVE FOR SELF FULFILLMENT

SUPER-SIZING CULTURE

SENSOR TECHNOLOGY

SUPER  
CAPABILITIES





# AUGMENTING HUMAN PHYSICAL CAPABILITIES EXOSKELETON ROBOTS



Raytheon XO2  
can lift 50 pounds per arm



Lockheed Martin HULC



# AUGMENTED HUMAN PHYSICAL CAPABILITIES EXOSKELETON ROBOTS



Bionics  
eLEGS



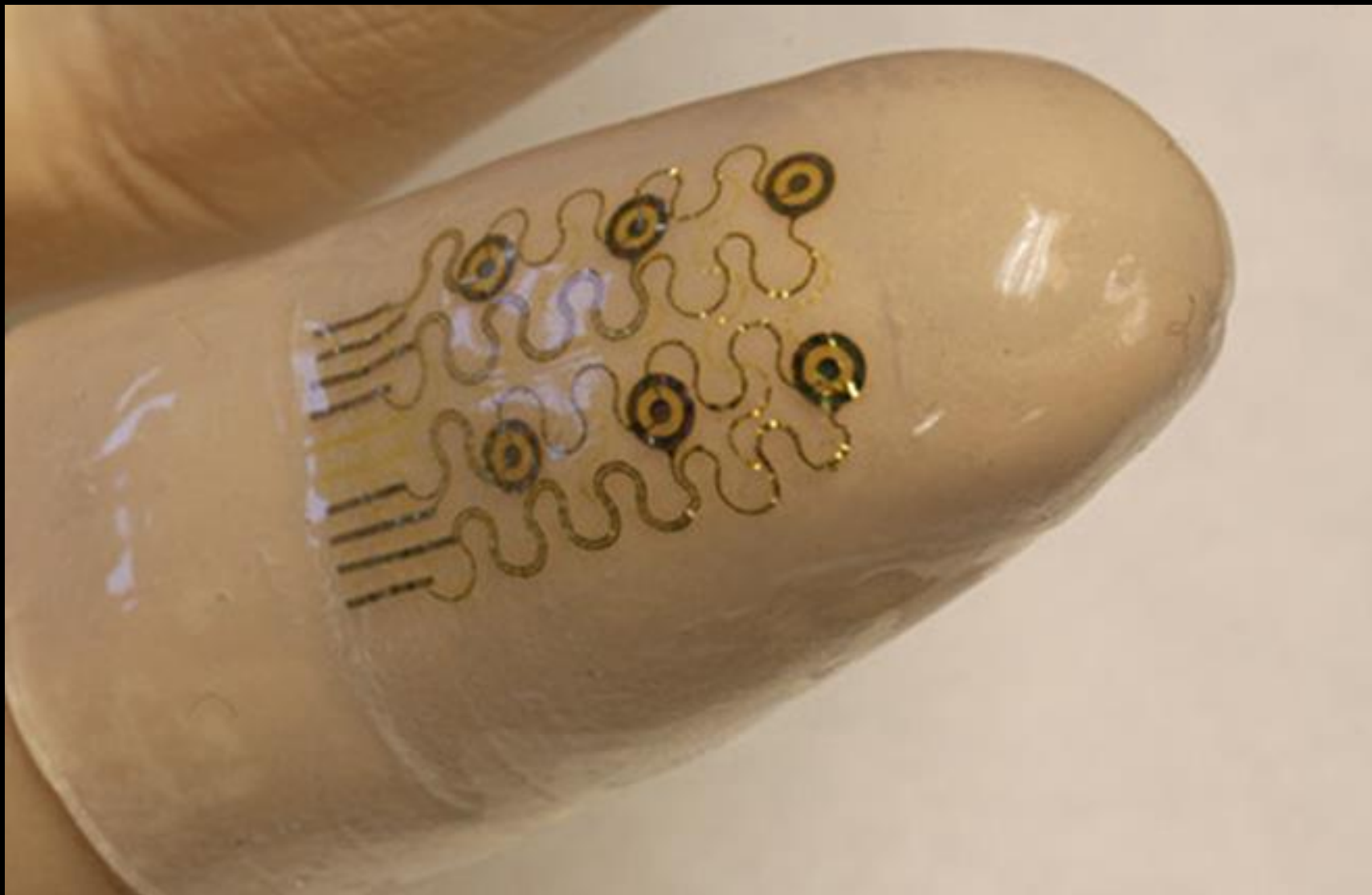
Huazhong University of  
Science and Technology,  
Wuhan, China

# AUGMENTED PERCEPTION

Google Glass



# AUGMENTED TOUCH



<http://www.kurzweilai.net/smart-fingertips-could-allow-for-virtual-surgery>

# AUGMENTED TASTE = PSEUDO-GUSTATION



Meta Cookie

# AUGMENTED EMOTIONS



[Sensory Fiction](#) by MIT's Media Lab

# AUGMENTED AUTONOMY



2015 Google car

# New Jobs That Did Not Exist Before



Developer of Super Human Capabilities

Assistive Robot Designer

Robot Training Assistant

Sensor-Body Interface Technologist

Smart Surface Application Technician



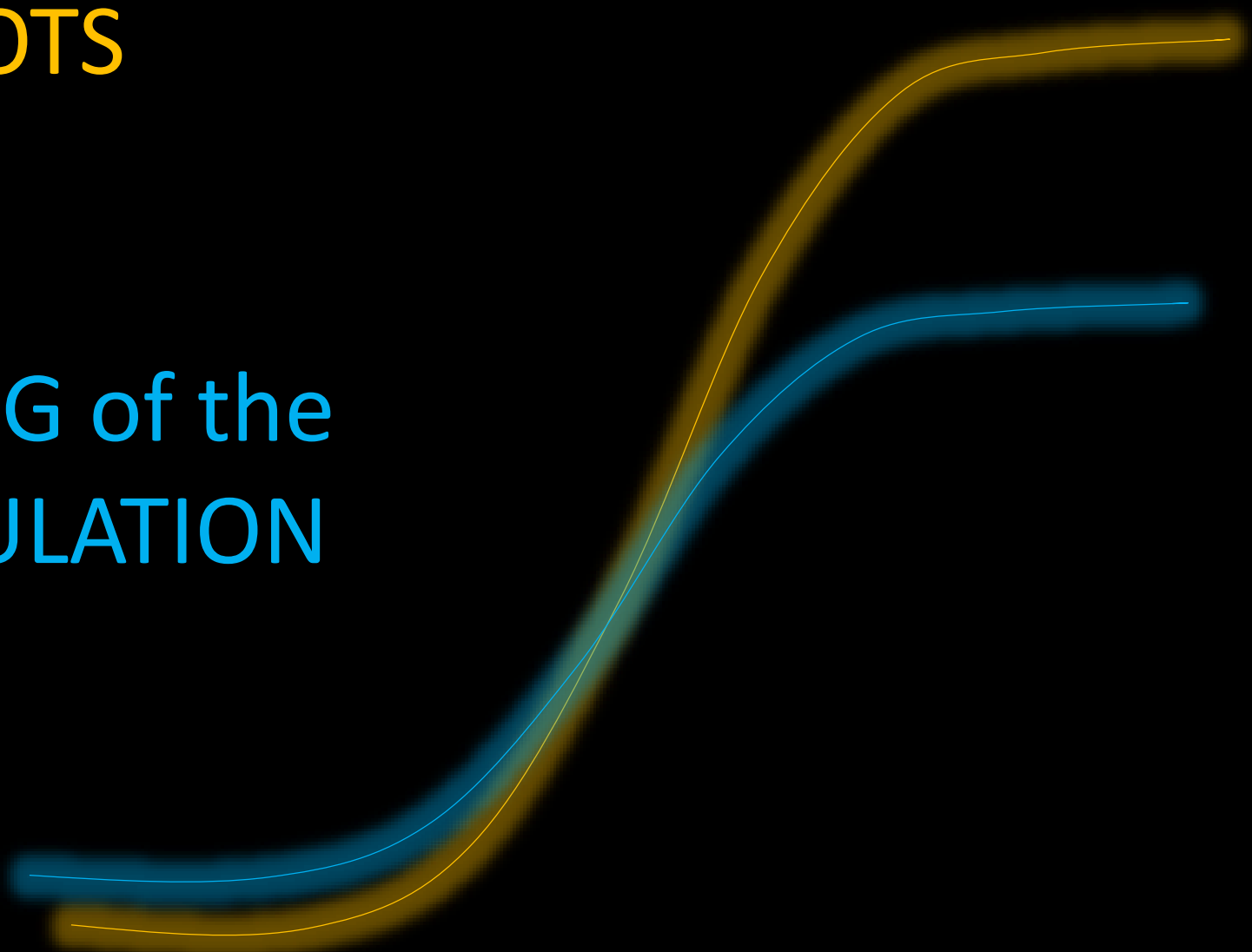
# Assistive Robots



# NEW SPACE

ROBOTS

AGING of the  
POPULATION



# Retail Assistant (Kyoto, Japan)



# Home Assistant Robot (Tokyo U.)



Reference:  
<http://phys.org/news180261433.html#jCp>

# Kaspar Robot

(U. of Hertfordshire, UK)

Kinesics and Synchronization in  
Personal Assistant Robotics



teaches social interactions and physical contacts to autistic children  
teaches social interactions and physical contacts to autistic children

# Nao

(U. of Connecticut)



Reference: U. of Connecticut,  
<http://today.uconn.edu/blog/2010/08/robot-speaks-the-language-of-kids/>

# ARTIFICIAL INTELLIGENCE



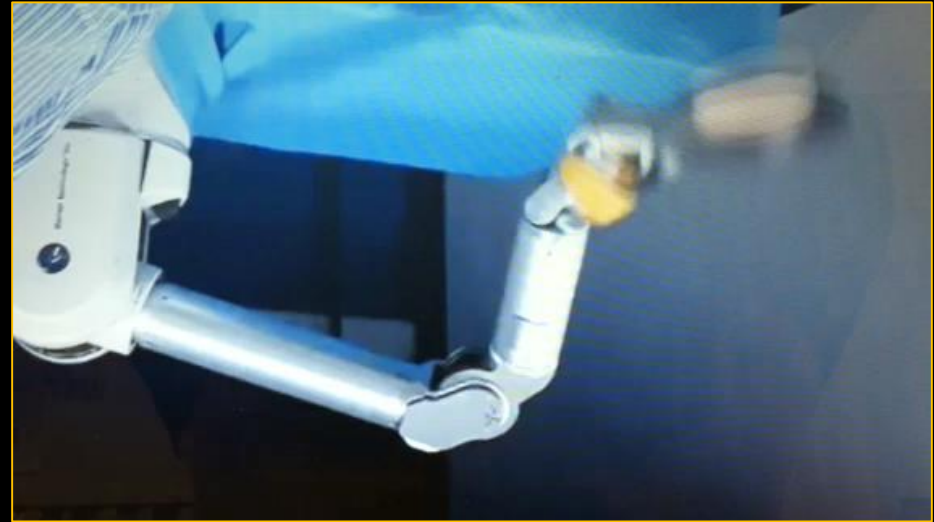
# MACHINE LEARNING A LARGE GAP TO DEVELOP

## MAKING COOKIES



MIT

## FLIPPING PANCAKES



Italian Institute of Technology  
WAM arm from Barrett Technology

# New Jobs That Did Not Exist Before



Geronto- EE Engineer  
Artificial Intelligence Engineer  
Robot Adapter Technician  
Robot Ordering Consultant

**Psychology**

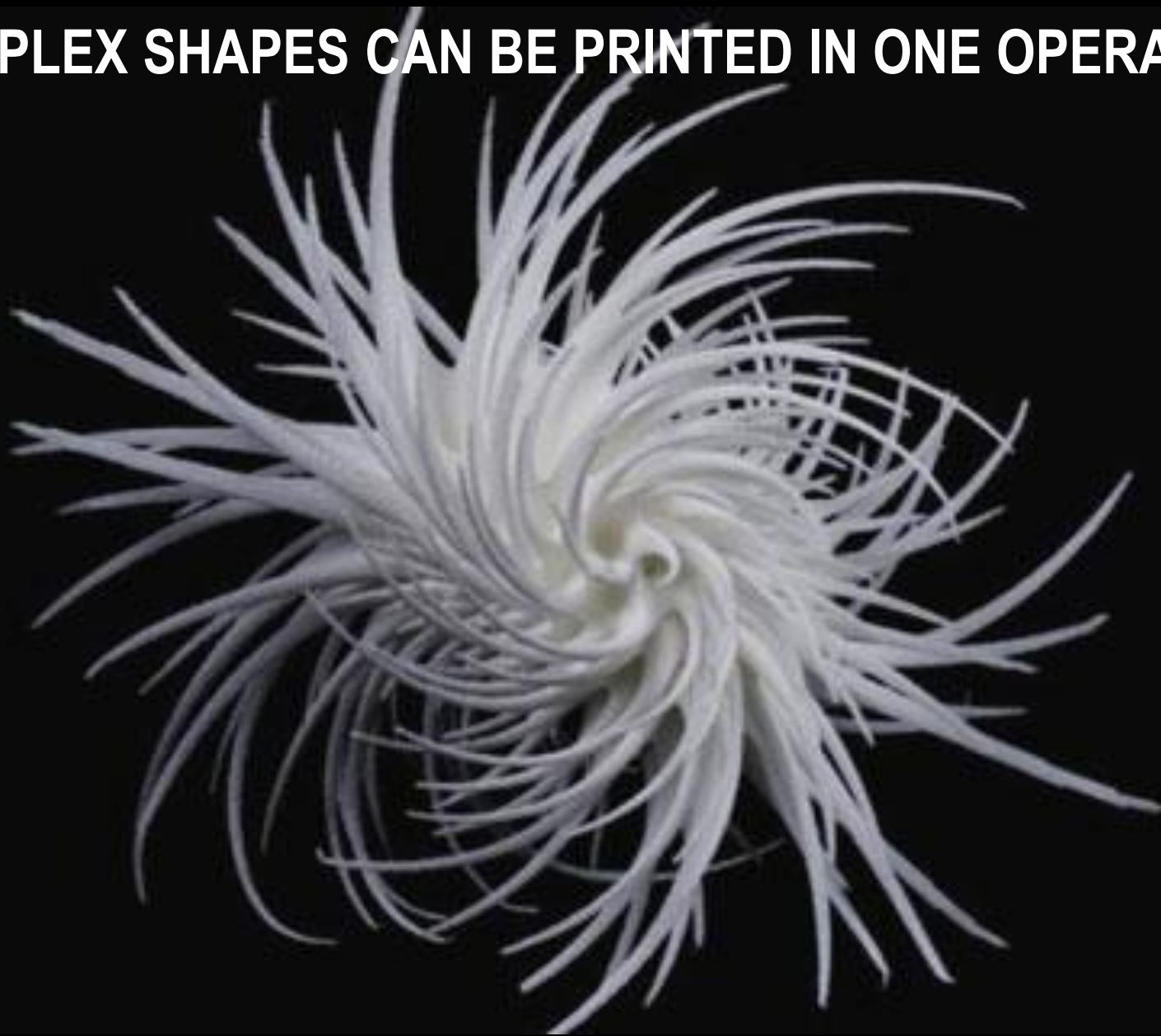
**Law**







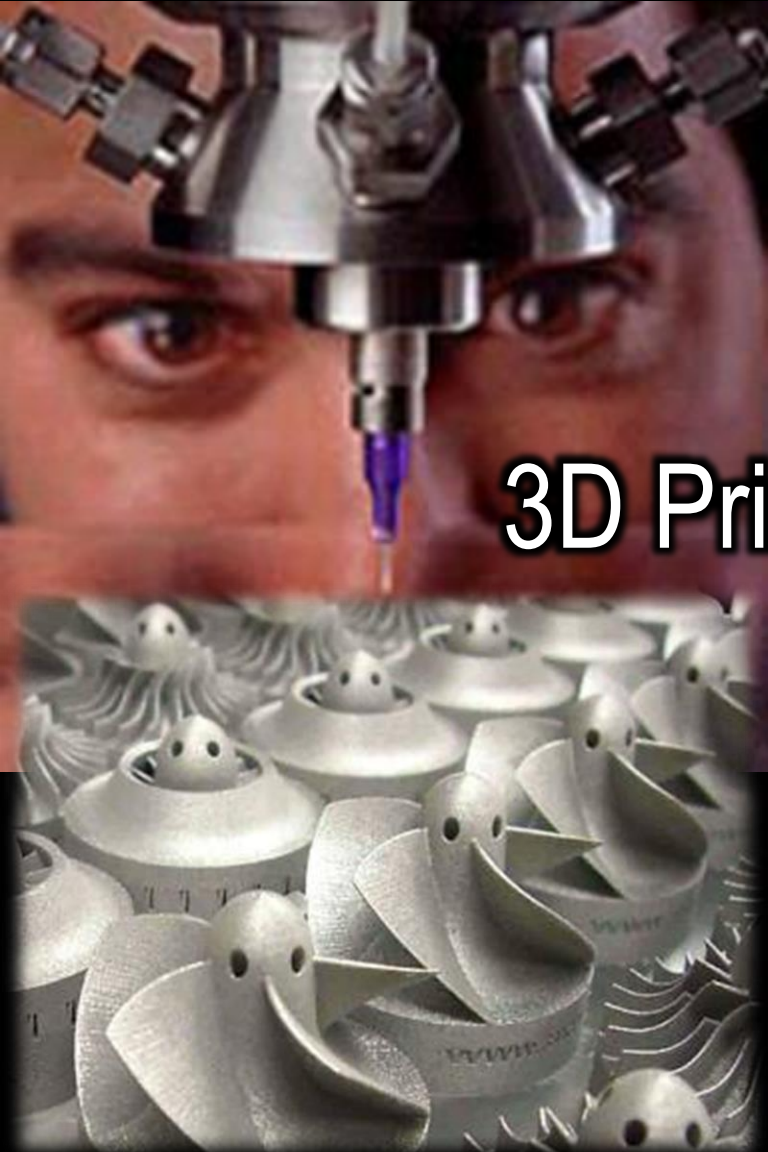
**COMPLEX SHAPES CAN BE PRINTED IN ONE OPERATION**





**SPRINGS AND INTERLOCKING WHEELS CAN BE PRINTED**

# New Jobs that Did Not Exist Before



Replicator Specialist  
3D Creation Designer  
3D Printing Material Developer  
Fluid Deposition Expert



**CIRCLING BACK TO OUR MISSION**

*Guide your  
daughters  
onto  
emerging  
S Curves*





THEIR FUTURE JOBS ARE  
AT THE CONVERGENCE OF  
2 OR MORE S CURVES

# SHOW THEM HOW TO MANAGE THEIR DIGITAL FOOTPRINT WISELY



AN IMAGE THAT IS  
POSITIVE,  
PROFESSIONAL  
&  
FOCUSED ON  
THE “S CURVES”



You can contact me at [dougaskegard@ieee.org](mailto:dougaskegard@ieee.org)